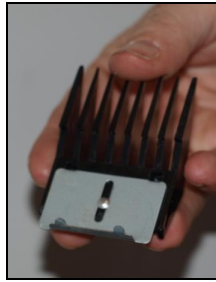
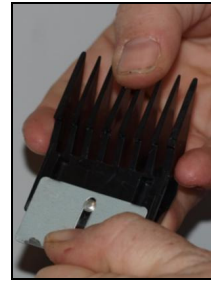


FITTING COMBS TO YOUR CLIPPER

1. Slide the base of the comb away from the top of the comb.



The back of the comb as it normally is.



The back of the comb when slid down.

2. Place the sliver part of the comb under the base of the blade on the clipper.



3. Holding the base of the comb under the base of the blade, gently slide the black part of the comb upwards towards the top of the blade.



4. Keep sliding the black part of the comb until it goes over the top edge of the blade.

